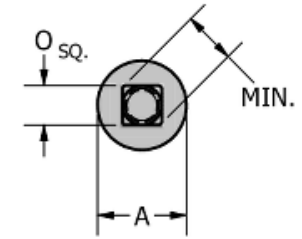
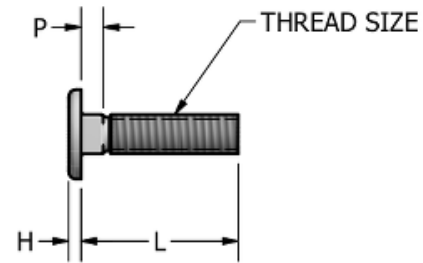


Flat Head Carriage Bolts



Product	Thread Size	Head Thickness (in)	Head Diameter (in)	Length (in)	A (in)	Tol A (in)	H (in)	Tol H (in)	L (in)	Tol L (in)	O (in)	Tol O (in)	P (in)	Tol P (in)	Min. Across Corners (in)
FCB 2108	1/4-20	0.078	0.563	0.485	0.563	+0.013 -0.013	0.078	+0.005 -0.005	0.485	+0.015 -0.015	0.253	+0.008 -0.008	0.141	+0.016 -0.016	0.321
FCB 2110	1/4-20	0.078	0.563	0.610	0.563	+0.013 -0.013	0.078	+0.005 -0.005	0.610	+0.015 -0.015	0.253	+0.008 -0.008	0.141	+0.016 -0.016	0.321
FCB 2112	1/4-20	0.078	0.563	0.735	0.563	+0.013 -0.013	0.078	+0.005 -0.005	0.735	+0.015 -0.015	0.253	+0.008 -0.008	0.141	+0.016 -0.016	0.321
FCB 2114	1/4-20	0.078	0.563	0.860	0.563	+0.013 -0.013	0.078	+0.005 -0.005	0.860	+0.015 -0.015	0.253	+0.008 -0.008	0.141	+0.016 -0.016	0.321
FCB 2116	1/4-20	0.078	0.563	0.995	0.563	+0.013 -0.013	0.078	+0.005 -0.005	0.995	+0.025 -0.025	0.253	+0.008 -0.008	0.141	+0.016 -0.016	0.321

Material: Low Carbon Steel



Buckeye Fasteners Company

5250 West 164th Street • Brook Park, Ohio 44142-1597
(800) 437-1689 • Fax: (216) 267-3228
buckeyefasteners.com • info@buckeyefasteners.com
© 2024 Buckeye Fasteners Company • All Rights Reserved

